



# Transducers



# Torque & Torque/Angle Rotary



# Torque & Torque/Angle Rotary Bluetooth



RMC Torque Rotary Transducers

Code	Model	Capacity		Drive
		N·m	ft·lb	mm
123 21 9001	Freedom RMC 2 HEX	2	1	HEX 1/4"
123 21 9002	Freedom RMC 5 HEX	5	4	HEX 1/4"
123 21 9016	Freedom RMC 10 HEX	10	4	HEX 1/4"
123 21 9003	Freedom RMC 10	10	7	1/4"
123 21 9004	Freedom RMC 20 HEX	20	15	HEX 1/4"
123 21 9005	Freedom RMC 20	20	15	1/4"
123 21 9006	Freedom RMC 25	25	19	3/8"
123 21 9007	Freedom RMC 75	75	56	3/8"
123 21 9008	Freedom RMC 180	180	133	1/2"
123 21 9009	Freedom RMC 250	250	185	3/4"
123 21 9010	Freedom RMC 500	500	370	3/4"
123 21 9014	Freedom RMC 750	750	553.2	1"
123 21 9011	Freedom RMC 1400	1400	1036	1"
123 21 9012	Freedom RMC 3000	3000	2220	1 1/2"
123 21 9013	Freedom RMC 5000	5000	3700	1 1/2"
197 99 0015	RMC Cable - Torque Cable to connect RMC to Datacollector			

RMCTA Torque/Angle Rotary Transducers

Code	Model	Capacity		Drive
		N·m	ft·lb	mm
123 22 9001	Freedom RMCTA 2 HEX	2	1	HEX 1/4"
123 22 9002	Freedom RMCTA 5 HEX	5	4	HEX 1/4"
123 22 9016	Freedom RMCTA 10 HEX	10	4	HEX 1/4"
123 22 9003	Freedom RMCTA 10	10	7	1/4"
123 22 9004	Freedom RMCTA 20 HEX	20	15	HEX 1/4"
123 22 9005	Freedom RMCTA 20	20	15	1/4"
123 22 9006	Freedom RMCTA 25	25	19	3/8"
123 22 9007	Freedom RMCTA 75	75	56	3/8"
123 22 9008	Freedom RMCTA 180	180	133	1/2"
123 22 9009	Freedom RMCTA 250	250	185	3/4"
123 22 9010	Freedom RMCTA 500	500	370	3/4"
123 22 9014	Freedom RMCTA 750	750	553.2	1"
123 22 9011	Freedom RMCTA 1400	1400	1036	1"
123 22 9012	Freedom RMCTA 3000	3000	2220	1 1/2"
123 22 9013	Freedom RMCTA 5000	5000	3700	1 1/2"
197 99 0015	RMCTA Cable - Torque/Angle Cable to connect RMC to Datacollector			

RMC Torque Rotary Transducers Bluetooth

Code	Model	Capacity		Drive
		N·m	ft·lb	mm
123 23 0001	Freedom RMC 2 BT HEX	2	1	HEX 1/4"
123 23 0002	Freedom RMC 5 BT HEX	5	4	HEX 1/4"
123 23 0016	Freedom RMC 10 BT HEX	10	4	HEX 1/4"
123 23 0003	Freedom RMC 10 BT	10	7	1/4"
123 23 0004	Freedom RMC 20 BT HEX	20	15	HEX 1/4"
123 23 0005	Freedom RMC 20 BT	20	15	1/4"
123 23 0006	Freedom RMC 25 BT	25	19	3/8"
123 23 0007	Freedom RMC 75 BT	75	56	3/8"
123 23 0008	Freedom RMC 180 BT	180	133	1/2"
123 23 0009	Freedom RMC 250 BT	250	185	3/4"
123 23 0010	Freedom RMC 500 BT	500	370	3/4"
123 23 0014	Freedom RMC 750 BT	750	553.2	1"
123 23 0011	Freedom RMC 1400 BT	1400	1036	1"
123 23 0012	Freedom RMC 3000 BT	3000	2220	1 1/2"
123 23 0013	Freedom RMC 5000 BT	5000	3700	1 1/2"

RMCTA Torque/Angle Rotary Transducers Bluetooth

Code	Model	Capacity		Drive
		N·m	ft·lb	mm
123 24 0001	Freedom RMCTA 2 BT HEX	2	1	HEX 1/4"
123 24 0002	Freedom RMCTA 5 BT HEX	5	4	HEX 1/4"
123 24 0016	Freedom RMCTA 10 BT HEX	10	4	HEX 1/4"
123 24 0003	Freedom RMCTA 10 BT	10	7	1/4"
123 24 0004	Freedom RMCTA 20 BT HEX	20	15	HEX 1/4"
123 24 0005	Freedom RMCTA 20 BT	20	15	1/4"
123 24 0006	Freedom RMCTA 25 BT	25	19	3/8"
123 24 0007	Freedom RMCTA 75 BT	75	56	3/8"
123 24 0008	Freedom RMCTA 180 BT	180	133	1/2"
123 24 0009	Freedom RMCTA 250 BT	250	185	3/4"
123 24 0010	Freedom RMCTA 500 BT	500	370	3/4"
123 24 0014	Freedom RMCTA 750 BT	750	553.2	1"
123 24 0011	Freedom RMCTA 1400 BT	1400	1036	1"
123 24 0012	Freedom RMCTA 3000 BT	3000	2220	1 1/2"
123 24 0013	Freedom RMCTA 5000 BT	5000	3700	1 1/2"



# Torque Static



Torque Static Transducers Connected by Cable

Code	Model	Capacity		Drive
		N·m	ft·lb	mm
123 25 0002	Freedom SMC 2	2	1	1/4"
123 25 0010	Freedom SMC 10	10	7	3/4"
123 25 0020	Freedom SMC 20	20	15	3/4"
123 25 0050	Freedom SMC 50	50	37	3/4"
123 25 0100	Freedom SMC 100	100	74	3/4"
123 25 0250	Freedom SMC 250	250	185	3/4"
123 25 0500	Freedom SMC 500	500	370	3/4"
123 25 1000	Freedom SMC 1000	1000	740	1"
123 25 2500	Freedom SMC 2500	2500	1850	1 1/2"
197 99 0007	SMC Cable - Torque Cable to connect Static Transducer to Datacollector			

Torque Static Transducers Connected by Cable for Hydraulic Pulse Tools

Code	Model	Capacity		Drive
		N·m	ft·lb	mm
123 26 0002	Freedom SMCI 2	2	1	SA 21
123 26 0010	Freedom SMCI 10	10	7	SA 21
123 26 0020	Freedom SMCI 20	20	15	SA 21
123 26 0050	Freedom SMCI 50	50	37	SA 21
123 26 0100	Freedom SMCI 100	100	74	SA 24
123 26 0250	Freedom SMCI 250	250	185	SA 24
123 26 0500	Freedom SMCI 500	500	370	SA 36
123 26 1000	Freedom SMCI 1000	1000	740	SA 46
123 26 2500	Freedom SMCI 2500	2500	1850	SA 46
197 99 0007	SMCI Cable - Torque Cable to connect Static Transducer to Datacollector			

SA = Special adapter

# Torque Static

## Bluetooth



Torque Static Transducers Bluetooth

Code	Model	Capacity		Drive
		N·m	ft·lb	mm
123 11 0002	Freedom SMC 2 BT	2	1	1/4"
123 11 0010	Freedom SMC 10 BT	10	7	3/4"
123 11 0020	Freedom SMC 20 BT	20	15	3/4"
123 11 0050	Freedom SMC 50 BT	50	37	3/4"
123 110100	Freedom SMC 100 BT	100	74	3/4"
123 11 0250	Freedom SMC 250 BT	250	185	3/4"
123 11 0500	Freedom SMC 500 BT	500	370	3/4"
123 11 1000	Freedom SMC 1000 BT	1000	740	1"
123 11 2500	Freedom SMC 2500 BT	2500	1850	1 1/2"

Torque Static Transducers Bluetooth for Hydraulic Pulse Tools

Code	Model	Capacity		Drive
		N·m	ft·lb	mm
123 13 0002	Freedom SMCI 2 BT	2	1	SA 21
123 13 0010	Freedom SMCI 10 BT	10	7	SA 21
123 13 0020	Freedom SMCI 20 BT	20	15	SA 21
123 13 0050	Freedom SMCI 50 BT	50	37	SA 21
123 13 0100	Freedom SMCI 100 BT	100	74	SA 24
123 13 0250	Freedom SMCI 250 BT	250	185	SA 24
123 13 0500	Freedom SMCI 500 BT	500	370	SA 36
123 13 1000	Freedom SMCI 1000 BT	1000	740	SA 46
123 13 2500	Freedom SMCI 2500 BT	2500	1850	SA 46

SA = Special adapter



## FWE and FWE TA



FWE - Torque Wrench for DataTouch<sup>3</sup>

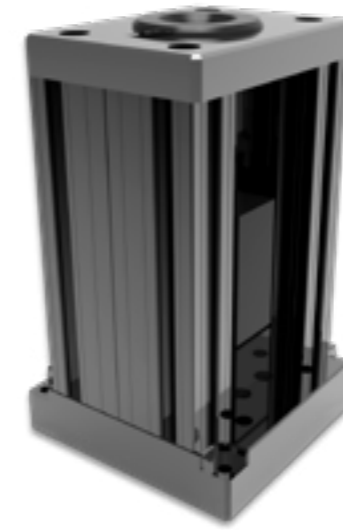
Code	Model	Capacity		Drive
		N-m	ft-lb	mm
113 20 0005	Freedom FWE 5	5	3.7	**
113 20 0010	Freedom FWE 10	10	7.4	**
113 20 0015	Freedom FWE 15	15	11	9 x 12
113 20 0030	Freedom FWE 30	30	22	9 x 12
113 20 0070	Freedom FWE 70	70	52	9 x 12
113 20 0100	Freedom FWE 100	100	74	9 x 12
113 20 0200	Freedom FWE 200	200	148	14 x 18
113 20 0300	Freedom FWE 300	300	222	14 x 18
113 20 0400	Freedom FWE 400	400	296	14 x 18
113 20 0600	Freedom FWE 600	600	444	14 x 18
113 20 0800	Freedom FWE 800	800	592	Ø 20
113 20 1000	Freedom FWE 1000	1000	740	Ø 20
197 99 0003	FWE Cable - Torque Cable to connect Wrench to Datacollector			

FWE TA - Torque/Angle Wrench for DataTouch<sup>3</sup>

Code	Model	Capacity		Drive
		N-m	ft-lb	mm
113 20 0005	Freedom FWE TA 5	5	3.7	**
113 20 0010	Freedom FWE TA 10	10	7.4	**
113 20 0015	Freedom FWE TA 15	15	11	9 x 12
113 21 0030	Freedom FWE TA 30	30	22	9 x 12
113 21 0070	Freedom FWE TA 70	70	52	9 x 12
113 21 0100	Freedom FWE TA 100	100	74	9 x 12
113 21 0200	Freedom FWE TA 200	200	148	14 x 18
113 21 0300	Freedom FWE TA 300	300	222	14 x 18
113 21 0400	Freedom FWE TA 400	400	296	14 x 18
113 21 0600	Freedom FWE TA 600	600	444	14 x 18
113 21 0800	Freedom FWE TA 800	800	592	Ø 20
113 21 1000	Freedom FWE TA 1000	1000	740	Ø 20
197 99 0004	FWE TA Cable - Torque/Angle Cable to connect Wrench to Datacollector			

## RGT

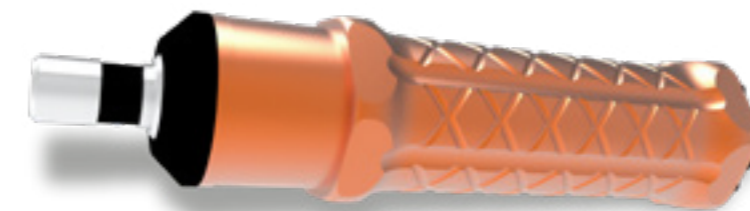
Rivet Nut Gun Tester



Code	Model	Capacity	A	B	C
			mm	mm	mm
123 99 0001	Freedom RGT 20	20 kN	211.5	129	115
123 99 0002	Freedom RGT 50	50 kN	211.5	129	115

## FSE

Torque Screwdriver



Code	Model	Capacity		Drive
		N-m	ft-lb	mm
123 30 1001	FSE 2	2	1.48	HEX ¼"
123 30 1002	FSE 5	5	3.69	HEX ¼"
123 30 1003	FSE 10	10	7.38	HEX ¼"
113 21 0015	Cable			